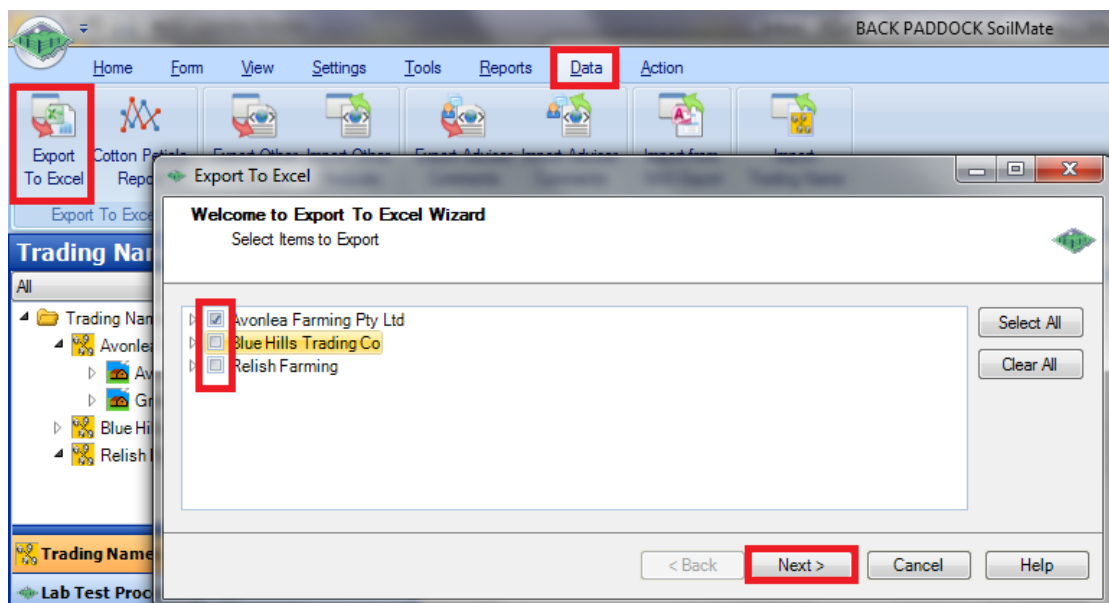


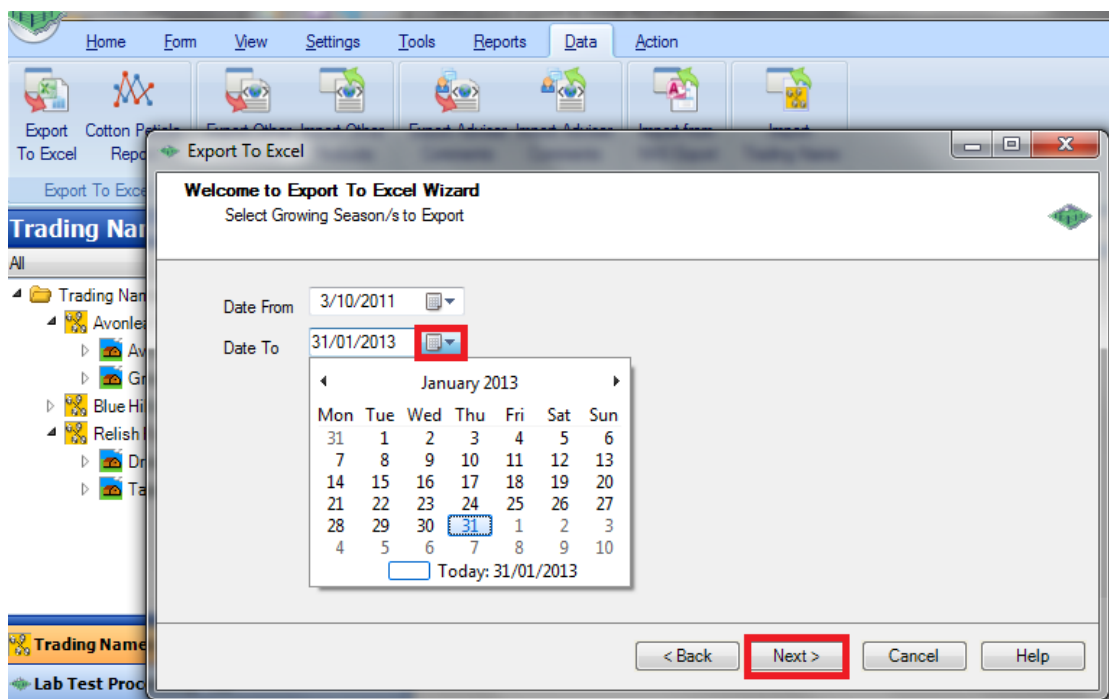
Exporting Data to Excel

1. Click on Data tab
2. Click on Export Data to Excel
3. Tick the desired Trading Names.

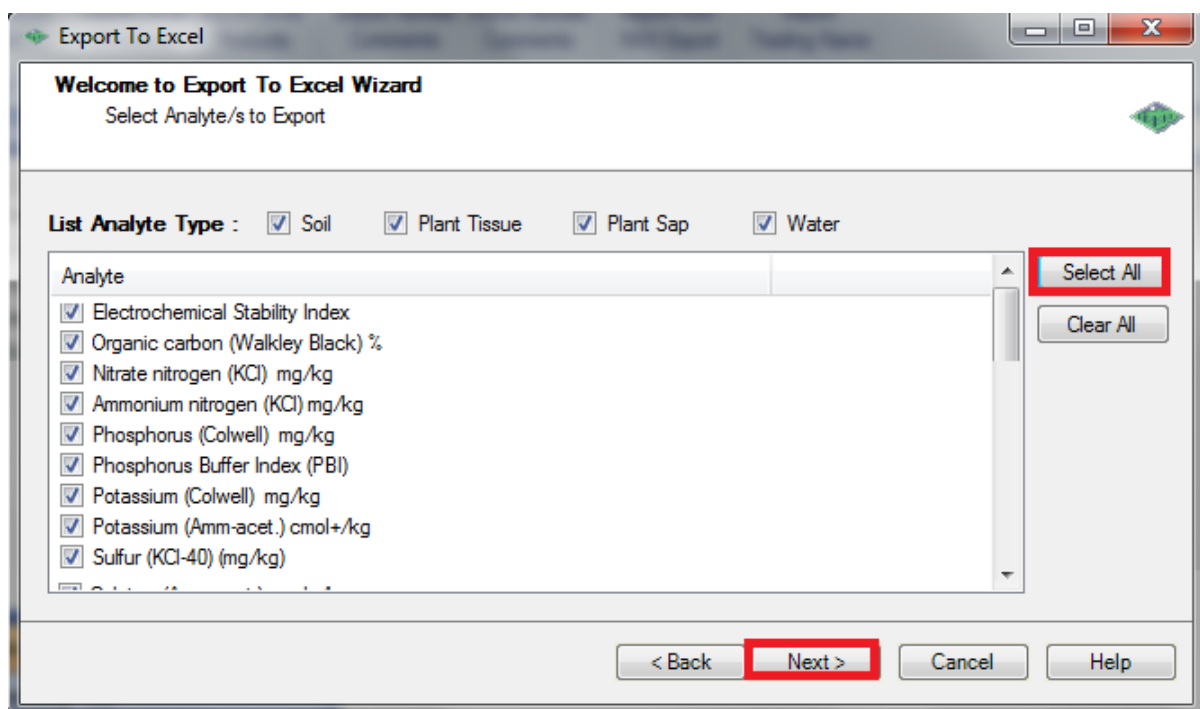
Note: Click on arrows next to name to drill down to farm and paddock level if required.



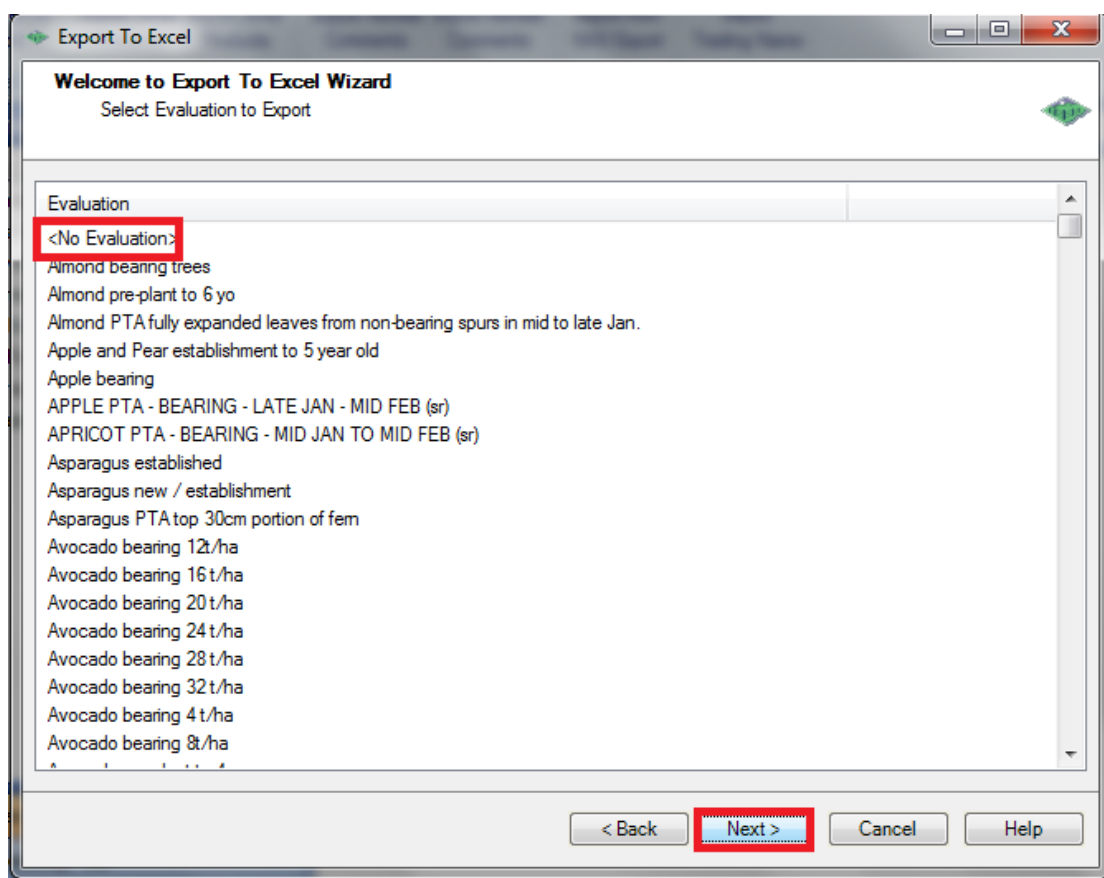
4. Click Next.
5. Select Date range for Date From and Date To using drop down calendar and scrolling between months and years. Click Next.



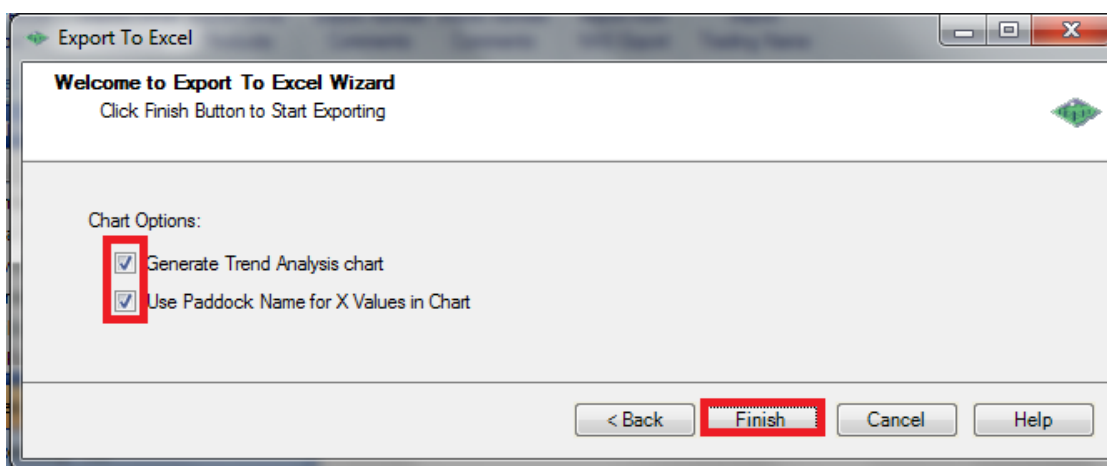
- Choose the List Analyte Type to cut back the Analyte list below. Choose Select All or tick the desired Analyte from the list. Click Next.



- Select Evaluation or <No Evaluation>. Click Next.



8. Tick or Untick Chart options. Click Finish.



9. Save the spreadsheet as required.

Raw results – with some formatting.

| | A | B | C | D | E | F | G | H | I | J | K | L | AE | AF | AG | AH | AI | AJ | AK | AL | AM | AN | AO | |
|---|-----------------------|-------------|-----------|-----------|------------|------|--------|------------|-------|----------------|-------|-------|----------------------------------|-------|-------|------------------------------|-------|-------|-------------------------------|-------|-------|------------------|-------|--|
| 1 | | | | | | | | | | pH (1:5 CaCl2) | | | Organic carbon (Walkley Black) % | | | Nitrate nitrogen (KCl) mg/kg | | | Ammonium nitrogen (KCl) mg/kg | | | Phosphorus mg/kg | | |
| 2 | TradingName | Farm | Paddock | LabTest | Barcode | Year | Season | SampleDate | Depth | Result | Lower | Upper | Result | Lower | Upper | Result | Lower | Upper | Result | Lower | Upper | Result | Lower | |
| 3 | Blue Hills Trading Co | Blue Valley | Nth Creek | BP0048962 | BP0048962 | 2012 | Spring | 40856 | | 6.67 | | | 0.9 | | | 5 | | | 1.05 | | | | 6 | |
| 4 | Blue Hills Trading Co | Blue Hill | BH01 | TKS12070 | BP0031275A | 2013 | Summer | 12/03/2012 | | 5.1 | | | | | | | | | | | | | 41 | |

Trend Analysis Charts

