

Contents

1.	Overview	1
2.	Q & A.....	1
2.1	What is a Master Database?	1
2.2	Can I have more than one Master Database?.....	1
2.3	Can I share my Master Database?.....	1
2.4	Can I synchronise my Master Database?	1
2.5	Can I share my Master Database with another user through CornerPost?	1
2.6	Can I keep my old one if I get updated?.....	1
2.7	Can I adjust my Master Database down the track?	2
2.8	Can we merge Master Databases?.....	2
2.9	I have some blank lines in my Master Database, is that okay?.....	2
3.	The Buttons.....	2
3.1	Hide Excluded Items.....	2
3.2	Exclude All Items in Table.....	2
3.3	Un-exclude All Items in Table.....	2
3.4	Show Product Codes	3
3.5	Tools Tab	3
4.	Choose Master Database file	3
4.1	Alternate method to set Master Database file	4
5.	Customise your Master Database	4
5.1	Reducing your Master Database	5
5.2	Adding items to / modifying your Master Database	6
5.3	Default Map Colours	7
5.4	Update Client From Master.....	8
6.	Sending your Master Database to CornerPost	9
7.	Help please!	10
7.1	Talking to Real People	10
7.2	See things Visually.....	10
7.3	Notes to look at it in my own time.....	10
7.4	Phones are down, need help!	10
7.5	Non-urgent brainwave in the middle of the night?	10



ADVISER MANUAL – About the MDB

1. Overview

By now, there may be some confusion surround the Master Database. What is it? Can you have more than one? Can you share them? Can you synchronise it with other devices under your account, or share with someone else through CornerPost? Read on to learn all the ins and outs of the Master Database (MDB). If you are looking for a basic Set Up guide, jump back through Adviser Manual – Create the Shell for a quick overview.

2. Q & A

2.1 What is a Master Database?

The Master Database is a catalogue of crop, fertiliser, chemical and timing information that is used throughout your program. In the Master Database provided with your program, we have pre-populated some of the common vendors, chemicals, fertilisers and crops to give you a bit of starting point. Once this has been installed on your computer, you are able to modify and expand as your need dictates. This also incorporates some basic pricing information for you to refine with prices relevant to your situation. This enables what you see in your program to be 100% relevant to your area, and even more importantly, your business.

2.2 Can I have more than one Master Database?

Yes, these are saved on your local directory and can be accessed individually through your program. One example of this might be if you are contracted to do work with an organisation that also uses Back Paddock, they may wish for you to use their Master Database to ensure correlation of products, seeds and pricing. This is easily achievable.

2.3 Can I share my Master Database?

Absolutely, once that Master Database has been installed on your computer you may do with it as you will. These are manually shared by email or USB to other users through each local directory.

2.4 Can I synchronise my Master Database?

Your Master Database can be synchronised and shared with your devices (for example, iPad, iPhone).

2.5 Can I share my Master Database with another user through CornerPost?

On your computer this is not available. However, we are now able to set up a special link to enable your Master Database to be shared with another users' Mobile App. Contact our Help Desk to see if you may be eligible for this exciting new development.

2.6 Can I keep my old one if I get updated?

Absolutely. By design, an update should not affect your Master Database. However, to ensure data preservation and to make your database easily identifiable when switching between multiple .pm files, renaming "AdviserManager.pm" to a unique name is best practice, ensuring you keep the

“.pm” extension. You will need to *Choose Master Database file* after this process to tell your program what the new name of your Master Database file is.

2.7 Can I adjust my Master Database down the track?

You sure can. This can be modified at any time; however, the changes will need to be pushed through to your Client File once complete. Any modifications that you would like to synchronise will need to be re-sent to CornerPost and retrieved on other devices. We recommend keeping this type of manipulation to a minimum once your program is in the full swing of things, with perhaps scheduled quarterly modifications as required.

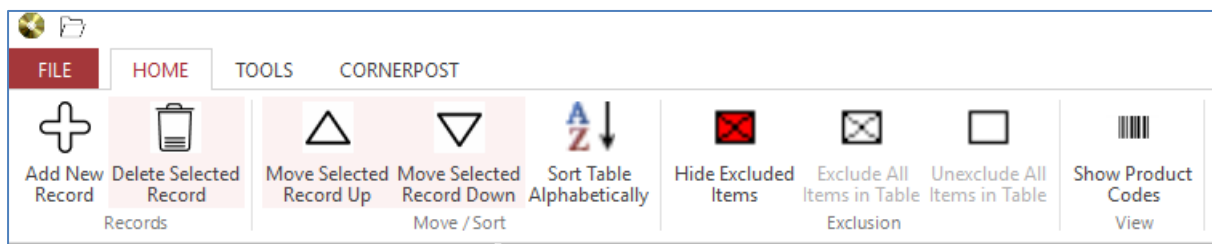
2.8 Can we merge Master Databases?

Unfortunately not. While Master Databases can be shared between Users there is no functionality to allow your list to be ‘combined’ with that of another user.

2.9 I have some blank lines in my Master Database, is that okay?

No, this can cause a lot of problems with your program including Data Access Errors and Runtime errors that close your program down. If you add a line, and then realise it is unnecessary, always delete it before you save and close the MDB.

3. The Buttons



The buttons above are what will be shown throughout your Master Database.

3.1 Hide Excluded Items

This tells the program that you only want to visually see the list of things that you have “unexcluded” in your Master Database. This is great to double check against your required entries and reduces the cross-eyed glaze that some of us get when staring at tiny tables with hundreds of entries! This can be clicked on or off, and does not affect the information available as such.

3.2 Exclude All Items in Table

This will sweep everything in your highlighted table (visible in the right pane) with one large Exclude brush. Clicking this will generate a warning, as this can potentially overwrite any prior customisation you have done. Select this if you are in the basic set up mode, or giving your Master Database a complete overhaul and want to override existing customisation.

3.3 Un-exclude All Items in Table

This will make everything in your Master Database in the highlighted table available in your program. This will also come up with a confirmation message as this overrides any existing exclusions.

3.4 Show Product Codes

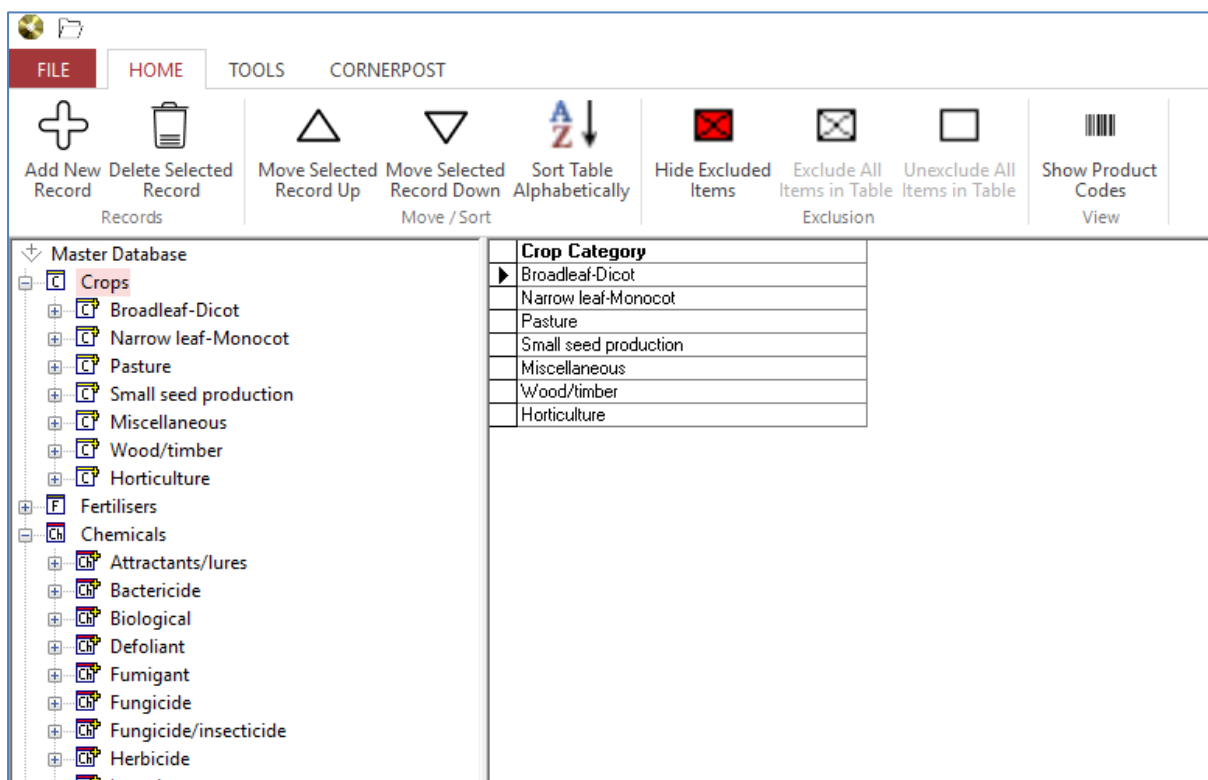
Clicking this will show you a generally hidden column in your table for Product Code information.

3.5 Tools Tab

This is a quick way to allow the user to allocate individual chemicals to a new/different Vendor if required.

4. Choose Master Database file

If you are one of the lucky people that have several Master Database files to choose from, you will need to tell the program which one you want it to use. The easiest way to choose this is through the Master Database itself.



1. Double click on the Adviser icon on your desktop
2. Click Home tab
3. Click Master Database disc

You will now have the screen as shown above. This is the Master Database file that your program is currently looking at.

4. Click File in top left corner
5. Click Set Master File
6. Click Browse

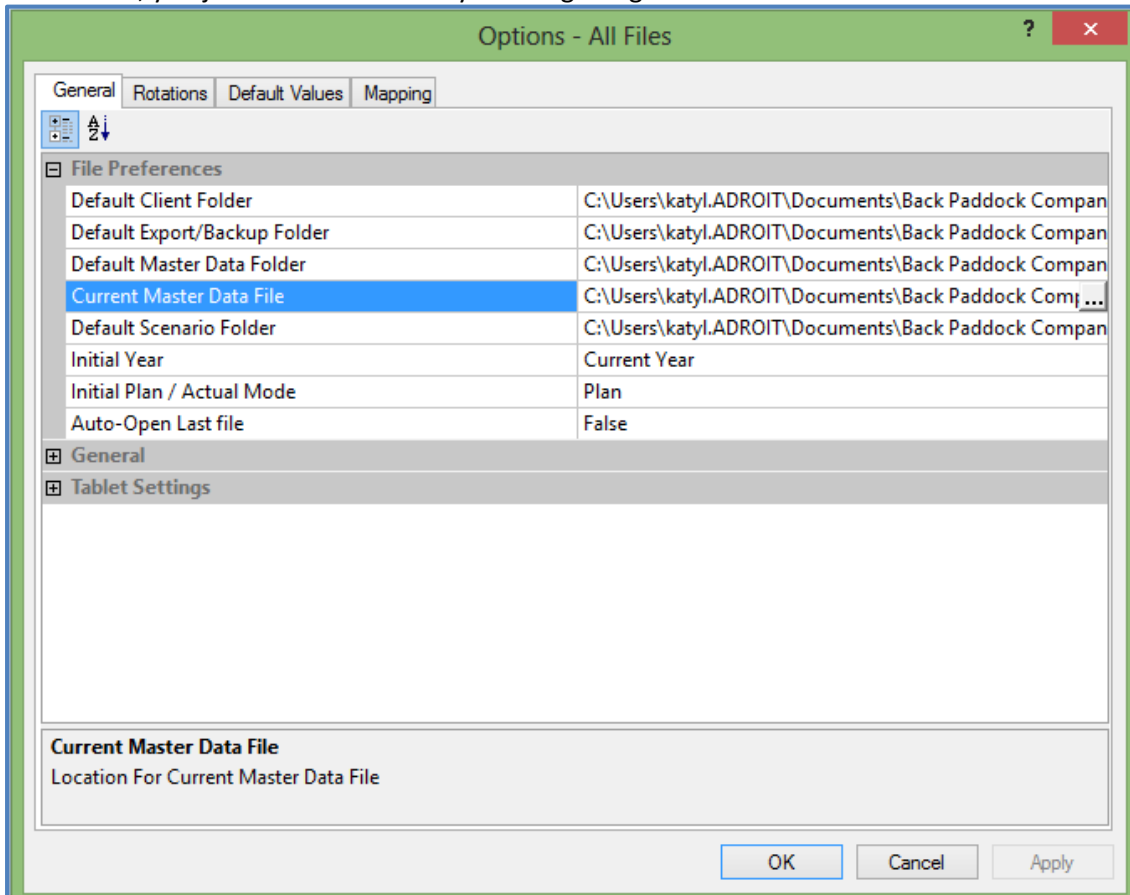
You are now taken to your local directory. Navigate to where your required Master Database file is located.

7. Click required Master Database (.pm type) to highlight
8. Click Open
9. Click Done

Your Master Database file has now been set.

4.1 Alternate method to set Master Database file

Sometimes, you just need another way of doing things.

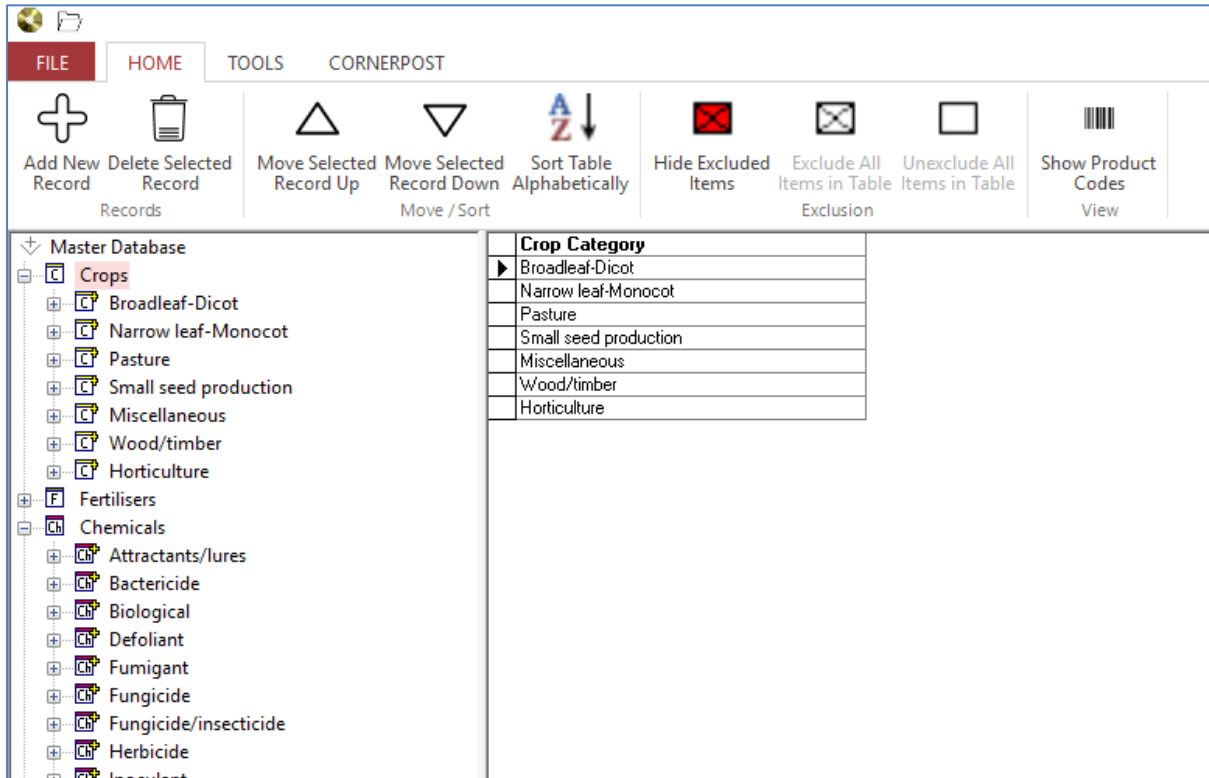


1. Double click on Adviser icon on your desktop
2. Click on File
3. Click on Options
4. Click on Current Master Data File to highlight
5. Click on the three dots (to the right) to open directory
6. Navigate to your required Master Database file (.pm type)
7. Click on your required Master Database file to highlight
8. Click Open
9. Click Apply
10. Click OK

5. Customise your Master Database

Picture this: we have information for about 95% of any of the crops, varieties, fertilisers, operations and timing comments that our users require all located in our Master Database. These populate the

drop down menus throughout your program. Chances are there are going to be large chunks of information that you never use. Our goal here is to cut this list down to things that you actually use to save you flicking through acres of superfluous information.

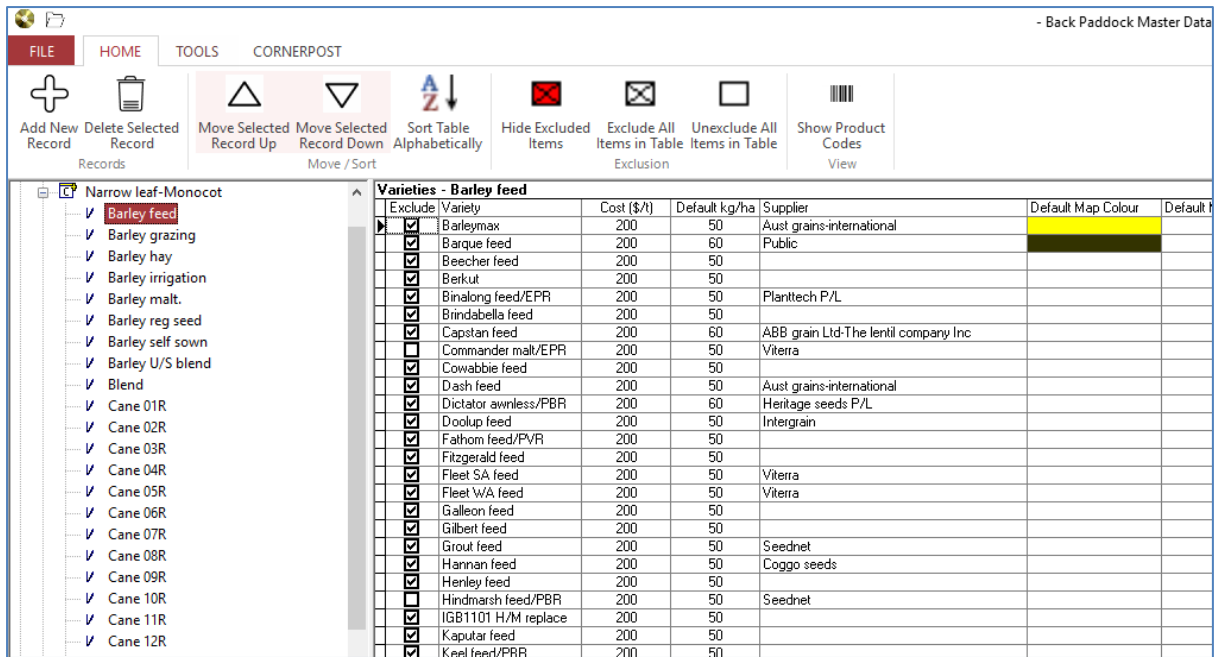


1. Double click on Adviser icon on desktop to open program
2. Click Home
3. Click Master Database

The terminology we use within the Master Database is “Exclude” and “Unexclude”. If something has a tick next to it that means it is Excluded (not included) in the lists within the program. Items without ticks are Unexcluded (included). Well confused? Just take it steady, one section at a time and be methodical.

5.1 Reducing your Master Database

Starting at the beginning, so with Crops. There are layers in the Master Database, they are classified by Crop first, then variety. Excluding an item at the top of the ladder will exclude items underneath it further down the ladder. For example, if you exclude all Narrow Leaf Monocots, you will not be able to see any barley, sorghum, oats, wheat etc.



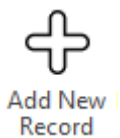
Clicking on the plus sign to the left of the classification (eg. Narrow Leaf Monocot) will show you a list of Crops in the left hand pane, and their corresponding Variety in the right hand pane. Layer upon layer!

Exclude crops that you don't require first, and then varieties. You may find it easier to "Exclude All Items in Table" and then un-tick the ones you want to see. As a check, click "Hide Excluded Items" to show you a list of only those you have included for your database. Click this red cross again to make all lines appear. Continue to Exclude or Unexclude down the list of crops.

It's a similar story for Fertilisers. If you click on the word "Fertilisers" the list of vendors will appear in the right hand pane for selection. Click on each vendors name in the left hand pane to see their fertiliser range.

5.2 Adding items to / modifying your Master Database

We've tried to follow a central theme here. It is easily possible to add new items to your Master Database by selecting "Add New Record" from your chosen location. This is situated in the top left corner of your screen and appears as per below.



Clicking this will enter a new line at the bottom of the screen that you are on (right hand pane). In the example below, Add New Record has been clicked with Crops highlighted. This will allow us to add a new Crop Category.

Crop Category
Narrow leaf-Monocot
Broadleaf-Dicot
Pasture
Small seed production
Miscellaneous
Wood/timber
Horticulture

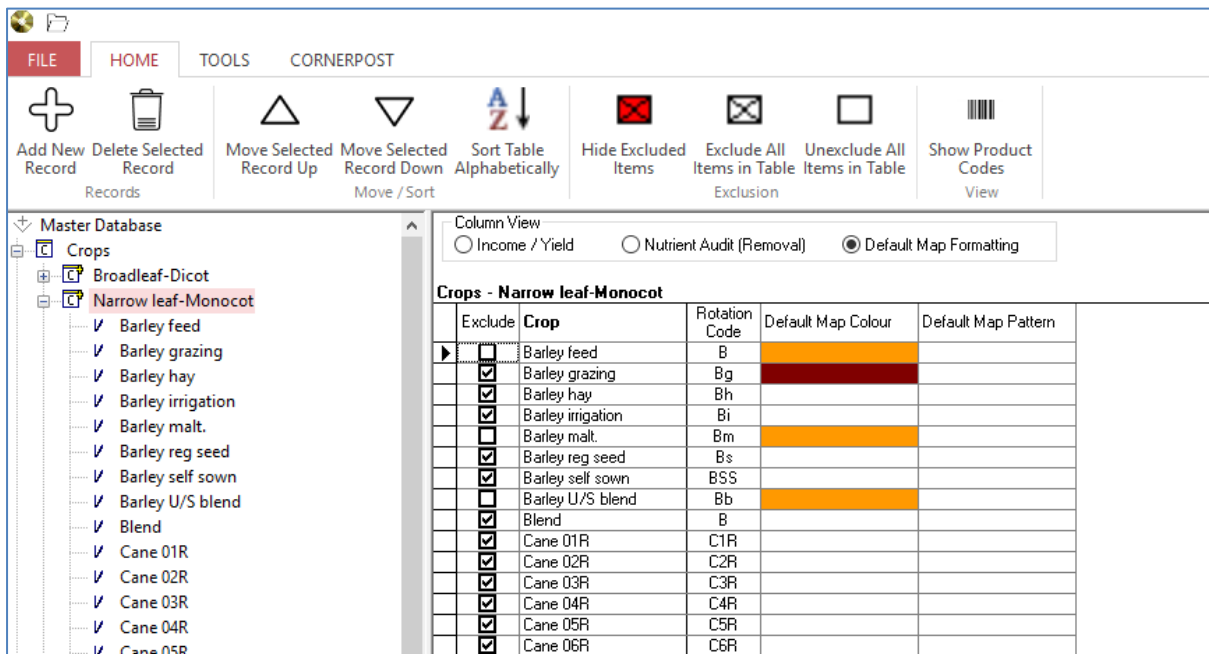
Details should then be entered as required. Click in any cell on the right hand pane to make adjustments to names or spelling as required.

Real time data editing is used to save changes to the Master Database, meaning that when data is entered into a cell the very minute you click off that cell the data is saved as a permanent record. Close out of your Master Database by clicking on the X in the top right corner of your screen.

The Master Database also includes default information for prices, expected yields, nutrient levels, rates and much more. These are easily modified to suit your situation by clicking in each cell and typing the new number. This will save you modifying it in your program each and every time that product is selected.

5.3 Default Map Colours

Default map colours for each variety are also set in your Master Database. Selecting these will ensure that colours remain the same each time.



The screenshot shows the software interface with a menu bar (FILE, HOME, TOOLS, CORNERPOST) and a toolbar with various icons. The 'Master Database' tree on the left is expanded to 'Crops' and then 'Narrow leaf-Monocot'. The main table, titled 'Crops - Narrow leaf-Monocot', has columns for 'Exclude', 'Crop', 'Rotation Code', 'Default Map Colour', and 'Default Map Pattern'. The 'Default Map Colour' column shows orange and red colors for various crop varieties.

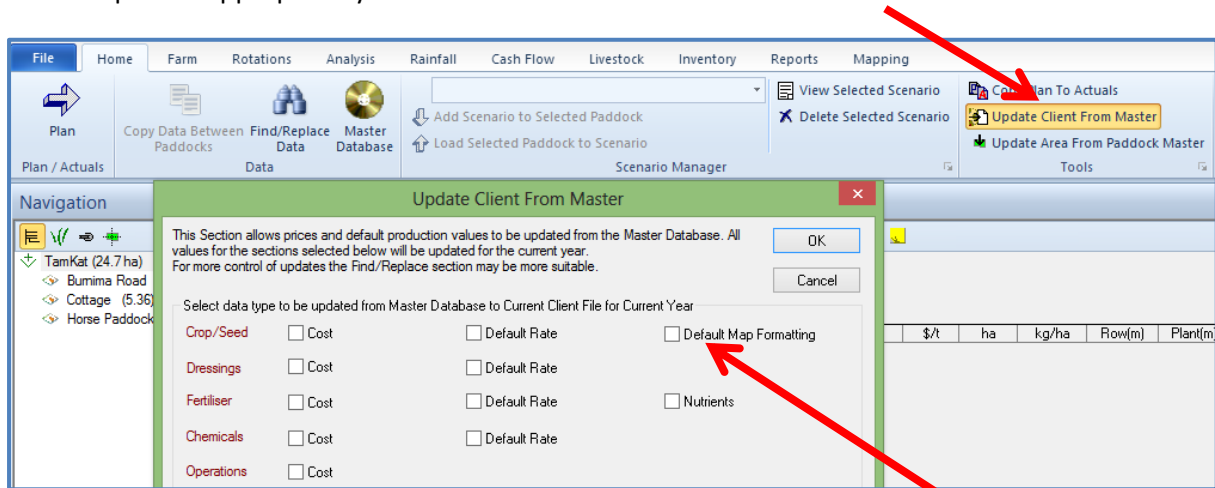
Exclude	Crop	Rotation Code	Default Map Colour	Default Map Pattern
<input type="checkbox"/>	Barley feed	B	Orange	
<input checked="" type="checkbox"/>	Barley grazing	Bg	Red	
<input checked="" type="checkbox"/>	Barley hay	Bh		
<input checked="" type="checkbox"/>	Barley irrigation	Bi		
<input type="checkbox"/>	Barley malt	Bm	Orange	
<input checked="" type="checkbox"/>	Barley reg seed	Bs		
<input checked="" type="checkbox"/>	Barley self sown	BSS		
<input type="checkbox"/>	Barley U/S blend	Bb	Orange	
<input checked="" type="checkbox"/>	Blend	B		
<input checked="" type="checkbox"/>	Cane 01R	C1R		
<input checked="" type="checkbox"/>	Cane 02R	C2R		
<input checked="" type="checkbox"/>	Cane 03R	C3R		
<input checked="" type="checkbox"/>	Cane 04R	C4R		
<input checked="" type="checkbox"/>	Cane 05R	C5R		
<input checked="" type="checkbox"/>	Cane 06R	C6R		

1. Open Master Database
2. Click on plus sign next to required Crop Type
3. Click on the Crop name
4. Adjust the “Default Map Colour” in the right hand Variety pane
5. Close Master Database to save changes

We now want these changes to be implemented in the program.

5.4 Update Client From Master

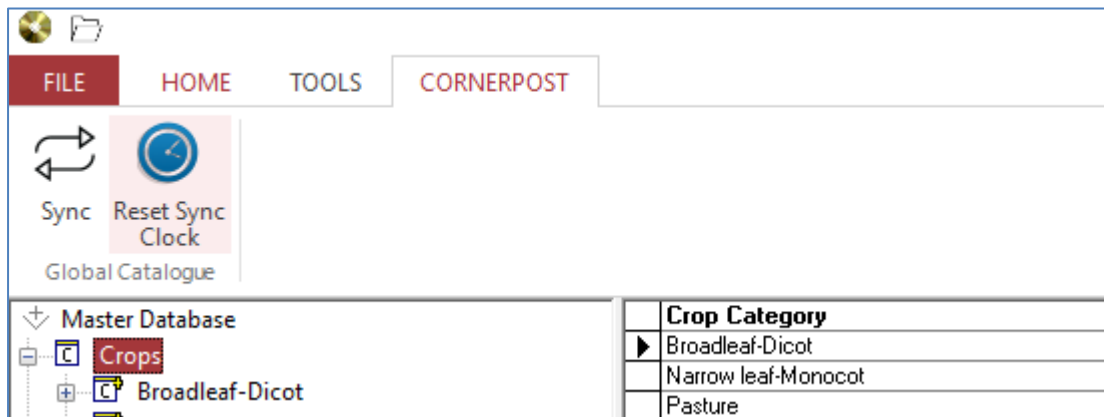
This button allows the changes that we have just made to be immediately implemented in the program. The steps below are for Default Map colours specifically, but ticking other boxes will adjust what is updated appropriately.



6. Click on “Update Client from Master” in the Home tab
7. Tick “Default Map Formatting”
8. Click OK

These changes will now be pushed through from your Master Database to your active client file.

6. Sending your Master Database to CornerPost



Unlike Client Files, the Master Database is sent to CornerPost in a section of its' own. This can be sent to CornerPost as a back-up, or in order to synchronise with another device registered in your name.

1. Double click on Adviser icon on desktop
2. Click Home
3. Click Master Database disc
4. Click CornerPost
5. Click Sync
6. Click Yes

This process can take several minutes. Please ensure that you have good internet connectivity for the duration of the Upload.

7. Click OK following successful upload.

Thanks for joining me in understanding your Master Database!

You are now in a position where you have customised the product, crop and timing information you are going to see in your program. By completing these set-up steps, you will save yourself a lot of time and complication down the track. Take a rest and come back to the next part of our Manual.

7. Help please!

We at Back Paddock understand that everyone is different and learns in different ways. To facilitate this and make our products more accessible for everyone, we have a plethora of different ways and means of obtaining assistance in any situation.

7.1 Talking to Real People

That's fine by us! We have a HelpDesk service that operates Monday to Friday 7:30am – 6pm on 07 3220 2959 and we are always happy to take your call.

7.2 See things Visually

Private webinar sessions can be arranged if you say please very nicely, and send an email through to Support@backpaddock.com.au Alternately, there are a few videos on various processes available online at <http://www.backpaddock.com.au/help-desk/> This gets updated frequently, so if you have a question about something that's not up there, let us know and we may just create one inspired by your request!

7.3 Notes to look at it in my own time

Not a problem! As well as this user manual, we have a heap of Help Sheets available online to point you in the right direction, get you started, and save you from any sticky situations you might find yourself in. Visit: <http://www.backpaddock.com.au/help-desk/> for the full list organised by program.

7.4 Phones are down, need help!

Have you seen met our Online Consultant? She's friendly, patient, knowledgeable and about three clicks away! Reach her at <http://www.backpaddock.com.au/help-desk/> by clicking on the Site Consultant button.

7.5 Non-urgent brainwave in the middle of the night?

How about an email? We've usually responded by the end of the next business day, and this gives you a chance to send us your thoughts or questions at any hour of the day or night! Give us a yell at Support@backpaddock.com.au

Good luck, and have fun!

Back Paddock Team.

Ph: 07 3220 2959

E: Support@backpaddock.com.au

W: www.backpaddock.com.au