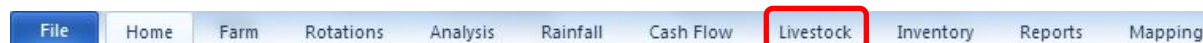


Livestock

Livestock tab is where you create and manage stock groups and mobs.



Stock Groups and Mobs

1. Adding Stock Group

1. Click on Add Button in Table 1: Stock Groups>Choose Stock group from drop down.

This Section Applies to ALL Years. Yearly data is contained in sections below.

Table 1: Stock Groups - Define Groups that will share Paddocks

Type	Group Name (optional)	Notes
Sheep	Wonga blood	
Cattle	Angus for feed lots	
Horse	Pets	

Area Allocated = 0.0 Ha
Average Stocking Rate = 0 DSE/Ha

Selected Group in Table 1 (Current Year Only)

Description (eg Tag Colour)	Open Number	DSE/hd	Value (\$/hd)	Notes
	0	0.0	\$0	

2. Enter Group Name in Item line.

2. Adding Mobs

1. Click Add Button in Table 2: Mobs>Choose Stock Class from drop down.

Area Allocated = 0.0 Ha
Average Stocking Rate = 0 DSE/Ha

Table 2: MOBS - Define Mobs for Selected Group in Table 1 (Current Year Only)

Stock Class	Description (eg Tag Colour)	Open Number	DSE/hd	Value (\$/hd)	Notes
Ewe	Red 2009 drop	100	1.5	120	
Ewe Bond		100	150.0	\$12,000	

2. Enter Description (eg Tag Colour).
3. Enter Open Number – the total for the mob.

Note: When adjusting mob numbers due to buying, selling or deaths/rations, the Open Number needs to be manually changed. All future costs, income and copying of the mob will reflect the adjusted Open Number.

4. Modify DSE and Value (\$/hd).

Note: The Year viewed can be adjusted by selecting the arrows located above table 2.

Area Allocated = 0.0 Ha
Average Stocking Rate = 0 DSE/Ha

Table 2: MOBS - Define Mobs for Selected Group in Table 1 (Current Year Only)

Stock Class	Description (eg Tag Colour)	Open Number
Ewe	Red 2009 drop	100

Livestock Income and Expenses

3. Modify details:

- **Units** – Adjust as appropriate. A default may appear.
- **\$/Unit (Low/Expected/High)** – Return of Item per Item Unit.
- **Units/hd** – Number of units of Item applied to Return (\$/Unit).
- **hd** – Number in mob Item applied too.
- **Date** – Date of Item completed.
- **Notes** – List additional descriptive information about the activity. Is displayed in the Livestock Report.

Note: Costs and income can be rearranged. Click on the Item to be moved>Click on the arrows to move the item up to down in the list. This is helpful in sorting by date order for easy view in Reports.

Income Type	Units	Low (\$/Unit)	Expected \$/Unit	High (\$/Unit)	(L
Wool 22 µm	kg	5	6	7	

3. Copying Income and Expenses between Mobs and Years

1. Click on Mob entry in Table 2>Click on Copy/Paste button.

Stock Class	Description (eg Tag Colour)	Open Number	DSE/hd	Value (\$/hd)	Notes
Ewe	Red 2009 drop	100	1.5	120	
Ram Bond	Red 2009 drop	5	1.2	650	
		105	156.0	\$15,250	

2. Tick Costs/Income>Choose Append or Replace option. (Doesn't matter for initial copy)

Year	Stock Class	Description
2013	Ewe	Red 2009 drop
2012	Cow Wagyu	
2012	Ewe Merino	Red Tag - 2009 Drop
2012	Bull Angus Red	
2012	Ram Dorper	Shoalhaven Park
2012	Lamb Prime -XBred	Green Tab - 2012 Drop
2011	Ewe Merino	
2011	Cow Wagyu	
2011	Ram Merino	
2011	Bull Angus Red	
2011	Lamb XB/export	
2010	Ewe Merino	
2010	Cow Wagyu	
2010	Ram Border Leicester	
2010	Ewe B/L merino X	
2009	Wether-merino	2005 drop Yellow ear tags

3. Click on Mob as source to copy from (can be from any year or mob)>Click Ok.
4. In destination Mob>Correct the stock numbers in costs and income.

2013 Area Allocated = 503.0 Ha
Average Stocking Rate = 0.3 DSE/Ha

Table 2: MOBS - Define Mobs for Selected Group in Table 1 (Current Year Only)

Stock Class	Description (eg Tag Colour)	Open Number	DSE/hd
Ewe	Red 2009 drop	100	1.5
Ram Bond		5	1.2
		105	156.0

Costs

Costs Income Gross Margin Paddock Allocation

Stock Costs - Enter Costs for Selected Mob in Table 2 (Current Year Only)

Description	Units	\$/Unit	Units/hd	hd	Date
Shearing	hd	6.5	1	12	1/01/2011
Crutching	hd	1.5	1	12	2/01/2011
Backline-sheep	ml	0.5	1	12	8/10/2011

Paddock Allocation

Paddocks where the costs are to be attributed to Stock must have Pasture ticked in Flags. Paddocks can only be allocated to one Stock Class at a time and not allocated to individual mobs.

1. Pasture Paddocks - Flags

1. In Home Tab>Click on Flag Button.

Management Zone

2013 Blend/Undersow Dress Irrigation **Flags**

2012 2013 2014
Wheat APH Barley feed

Ironbark

Crop Type	Variety	\$/t	ha	kg/ha	Date	Pasture	U/Sow	Blend
Barley feed	Hindmarsh (Feed/	200	178	50	5 May 13	<input checked="" type="checkbox"/>	<input type="checkbox"/>	<input type="checkbox"/>

2. Tick Pasture box if paddock is grazed at any stage.

Note: For grazing of feed/grain crops to be harvested. It is not recommended to allocate the paddock to Livestock as it will carry through all costs to the Gross Margin for that Stock Class. Tick Pasture as a record that the crop was grazed thus potential for reduced grain yield.

2. Allocating Paddocks

1. Click on Paddock Allocation Tab in Table below.

Table 2: MOBS - Define Mobs for Selected Group in Table 1 (Current Year Only)

Stock Class	Description (eg Tag Colour)	Open Number	DSE/hd	Value (\$/hd)	Notes
Ewe	Red 2009 drop	100	1.5	120	
Ram Bond		5	1.2	650	
		105	156.0	\$15,250	

Paddock Allocation

Costs Income Gross Margin **Paddock Allocation**

Pasture Paddocks 2013

- Avonlea
 - Horse (234 ha)**
 - Kangaroo (159 ha)
 - Pine Tree (110 ha)
 - Wattle Pk (179 ha)
- Green Swamp
 - Church (179 ha)
 - Shearing Shed (79 ha)

Stock Paddock Allocation - List Paddocks to be used by Selected Stock (

Paddock	Area (ha)	Notes
Horse	234	
Kangaroo	159	
	393.0	

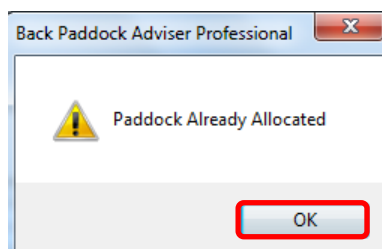
2. Click Add button>Click on Paddock Name.
3. To allocate Paddock to another Stock Class>Click on Stock Class in Table 1>Repeat Steps 1-2.

This Section Applies to ALL Years. Yearly data is contained in sections below.

Table 1: Stock Groups - Define Groups that will share Paddocks

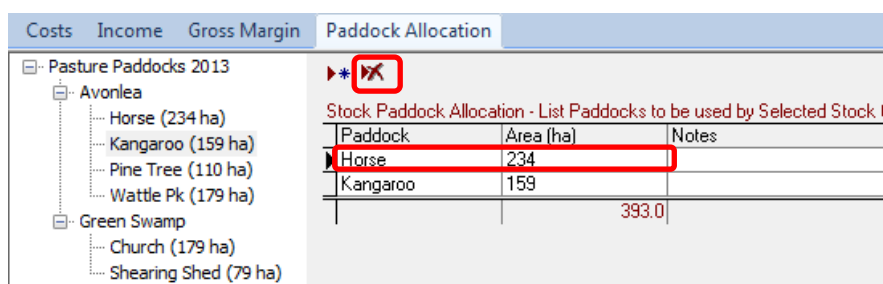
Type	Group Name (optional)	Notes
Sheep	Wonga blood	
Cattle	Angus for feed lots	
Horse	Pets	

- Paddocks already allocated are unable to be shared between Stock Classes. Only one Stock Class per paddock per year.

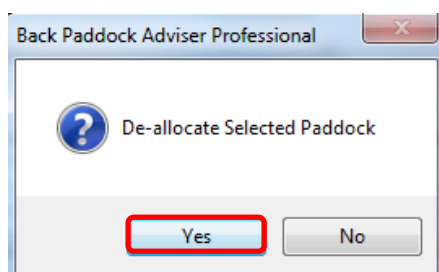


3. Removing Paddock Allocation

- To remove paddock allocation>Click on the Stock Class then Paddock Allocation Tab where the paddock is listed as allocated.
- Click on Paddock to be removed>Click on Delete button.



- Click Yes to De-allocate Selected Paddock.




Livestock Gross Margin and Report

1. Gross Margin

Review the costs and income breakdown per Stock Class using the Gross Margin Tab. Costs of any allocated paddocks are also included in the Gross Margin for the Stock Class.

1. Select Stock Class in Table 1>Click on Gross Margin tab.
2. Tick Include Livestock Capital Costs to include paddock costs. (optional)

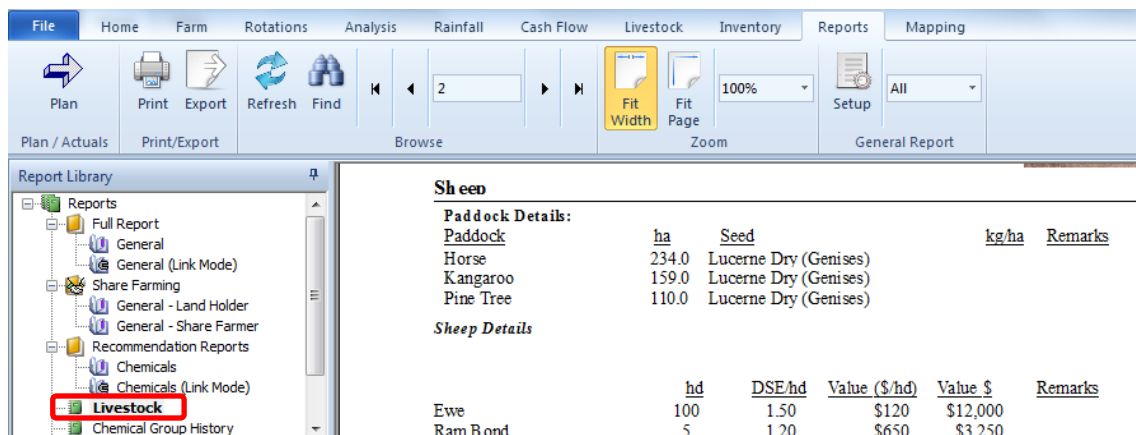
Gross Margin					
Costs	Income	Gross Margin	Paddock Allocation		
	<input type="checkbox"/> Include Interest	<input checked="" type="checkbox"/> Include Livestock Capital Costs	<input type="checkbox"/> Include Depreciation		
Livestock Gross Margin Summary - Plan					
Sheep	503.0 ha	156.0 DSE	0.3 DSE / ha		
INCOME			Low \$	Exp \$	High \$
		Low Prod	\$2,000	\$2,400	\$2,800
		Exp Prod	\$2,500	\$3,000	\$3,500
		High Prod	\$3,000	\$3,600	\$4,200
STOCK COSTS			Units	\$	\$ / ha
Shearing		100	hd	\$650	\$1.29
Chemicals				\$6,036	\$12.00
Operations				\$7,042	\$14.00
Livestock Capital Cost				\$1,220	\$2.43
			Total Costs	\$14,948	\$29.72
GROSS MARGIN \$			-\$12,948	-\$12,548	-\$12,148
			-\$12,448	-\$11,948	-\$11,448
			-\$11,948	-\$11,348	-\$10,748
GROSS MARGIN \$ / ha			-\$25.74	-\$24.95	-\$24.15
			-\$24.75	-\$23.75	-\$22.76
			-\$23.75	-\$22.56	-\$21.37
GROSS MARGIN \$ / DSE			-\$83.00	-\$80.44	-\$77.87
			-\$79.79	-\$76.59	-\$73.38
			-\$76.59	-\$72.74	-\$68.90

Note: Gross Margin table displays for total Stock Class not per mob. For Per Mob Gross Margin see Livestock Report.

2. Livestock Report

Displays a more detailed report broken down by Mobs and Stock Class.

1. Click on Report tab> Click Livestock Report in the Report Library.



2. Livestock Report Displays:

- Livestock Cost and Requisite Summary (All Stock) – Displaying All Costs for all Stock Classes.

<u>LIVESTOCK SUMMARY</u>			
<u>Livestock Cost and Requisite Summary (All Stock)</u>			
Subreport: StockCostSum.rpt	Required		\$
Backline-cattle X 02	67.00 ml		\$590
Backline-sheep	1,812.00 ml		\$906
Crutching	912.00 hd		\$1,368
Drench sheep	10,800.00 ml		\$540
Marking	678.00 hd		\$542
Shearing	912.00 hd		\$5,928
Ultravac 6 in 1	1,356.00 ml		\$610
			\$10,484

- Paddock Details Summary

<u>Sheep</u>				
Paddock Details:				
Paddock	ha	Seed	kg/ha	Remarks
Outside Pvt 1	115.0	Lucerne Dry (Genises)		
Pine Tree	110.0	Lucerne Dry (Genises)		
Quandong	277.0	Lucerne Dry (Genises)		
Sand Hill	206.0	Oats grazing (Yarren / L Lignin)	100.00	
Wilga	92.0	Lentil (Cassab CL/Red)	50.00	
Sheep Details				

- Stock Summary – All Mobs.

	hd	DSE/hd	Value (\$/hd)	Value \$	Remarks
Ewe Merino	900	1.50	\$100	\$90,000	
Ram Dorper	13	1.20	\$900	\$11,700	
Lamb Prime -XBred	870	1.40	\$150	\$130,500	
TOTAL:	1,783	2,584		\$232,200	
<i>Total Area Allocated = 800.0 ha Average Stocking rate = 3.2 DSE/ha</i>					

- Gross Margin per Mob.

Mob Details											
Ewe Merino - Red Tag - 2009											
Drop											
Production / Income:											
Wool 19 um			\$ 6			\$ 6.50			\$ 7		
	hd/hd	hd	\$	\$/hd	\$/DSE	\$	\$/hd	\$/DSE	\$	\$/hd	\$/DSE
Pess.	4.0	3,600	\$21,600	\$24.00	\$16.00	\$23,400	\$26.00	\$17.33	\$25,200	\$28.00	\$18.67
Exp.	5.0	4,500	\$27,000	\$30.00	\$20.00	\$29,250	\$32.50	\$21.67	\$31,500	\$35.00	\$23.33
Opt.	6.0	5,400	\$32,400	\$36.00	\$24.00	\$35,100	\$39.00	\$26.00	\$37,800	\$42.00	\$28.00
Costs			Units	\$/Unit	Units/hd	hd	\$	Remarks			
Shearing			hd	\$6.50	1.00	900	\$5,850				
Crutching			hd	\$1.50	1.00	900	\$1,350				
Backline-sheep			ml	\$0.50	2.00	900	\$900	Name Brand Backliner			
Drench sheep			ml	\$0.05	12.00	900	\$540	Name Brand Drench			
Total Costs:							\$8,640				
GROSS MARGIN:											
			\$	\$/hd	\$/DSE	\$	\$/hd	\$/DSE	\$	\$/hd	\$/DSE
Pess.			\$12,960	\$14.40	\$9.60	\$14,760	\$16.40	\$10.93	\$16,560	\$18.40	\$12.27
Exp.			\$18,360	\$20.40	\$13.60	\$20,610	\$22.90	\$15.27	\$22,860	\$25.40	\$16.93
Opt.			\$23,760	\$26.40	\$17.60	\$26,460	\$29.40	\$19.60	\$29,160	\$32.40	\$21.60

- Gross Margin by Stock Class – Includes stock and paddock costs.

GROSS MARGINS: Sheep (Production and Prices Averaged Across All Mobs)											
Total Costs=9,894			Pess.			Opt.					
			\$	\$/ha	\$/DSE	\$	@GMLab (String)	\$	\$/ha	\$/DSE	
Pess.			\$11,993	\$14.99	\$4.64	\$13,817	\$17.27	\$5.35	\$15,641	\$19.55	\$6.05
Exp.			\$17,465	\$21.83	\$6.76	\$19,745	\$24.68	\$7.64	\$22,025	\$27.53	\$8.53
Opt.			\$22,937	\$28.67	\$8.88	\$25,673	\$32.09	\$9.94	\$28,409	\$35.51	\$11.00