

Find & Replace

The Find and Replace feature allows quick updating and changing of prices, rates and products within Client or Scenario Files. It also enabled enquiries to find where and when instances that inputs, products and prices are used throughout the File. This saves having to trawl through each paddock manually. This function is also used as a quick check prior to finalising the Plan or Actuals.

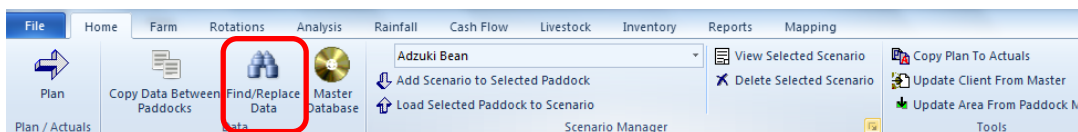
1. Open Find/Replace

1. Open Client File>Select Correct Year (Use arrows to change year).

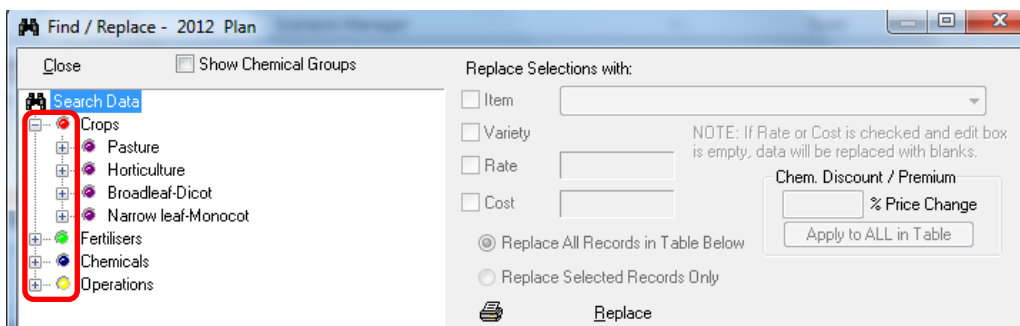


Note: Find replace only updates prices/rates/products in that client file only for that year. It does not update the Master Data Base. Although use copy and paste into other years the changes carry through.

2. Click Find/Replace Button.



3. Find/Replace Box appears>Click on the '+' next to the Coloured dots to expand each section>Continue to click to drill down into each section.

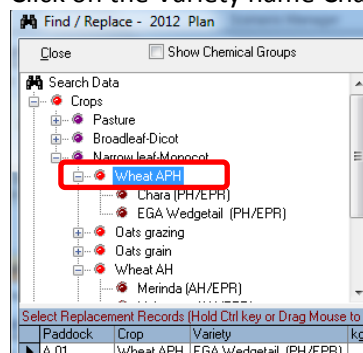


2. Find/Replace Sowing Rate and Seed Cost

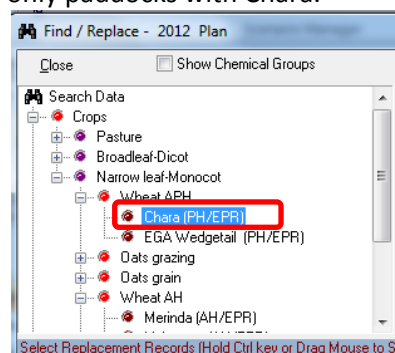
Update sowing rates and seed costs in each paddock without the need to use Copy and Paste.

1. Click on '+' next to Crops/Crop/ Type/Variety.

For Example: Click on Wheat APH to view all the Varieties. And/Or Click on the Variety name Chara to view only paddocks with Chara.

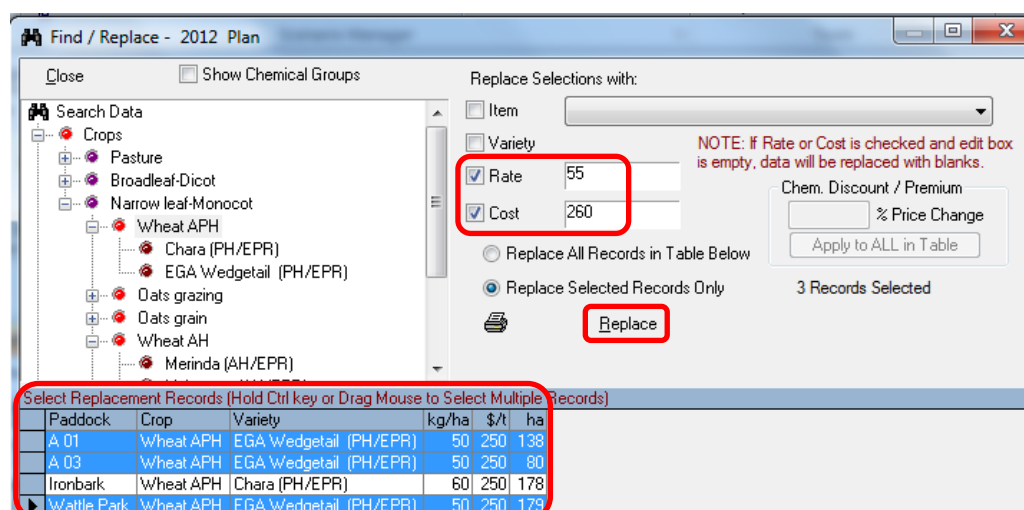


Crop Type



Variety

2. Tick Rate and/or Cost box>Enter figures to replace.



Replace Selected Records only by choosing individual paddocks>Hold Ctrl Key on Keyboard down>Single click on each Paddock Name to select>Release Ctrl Key> Click Replace button.

Or

Click Replace button to Replace All Records in Table.

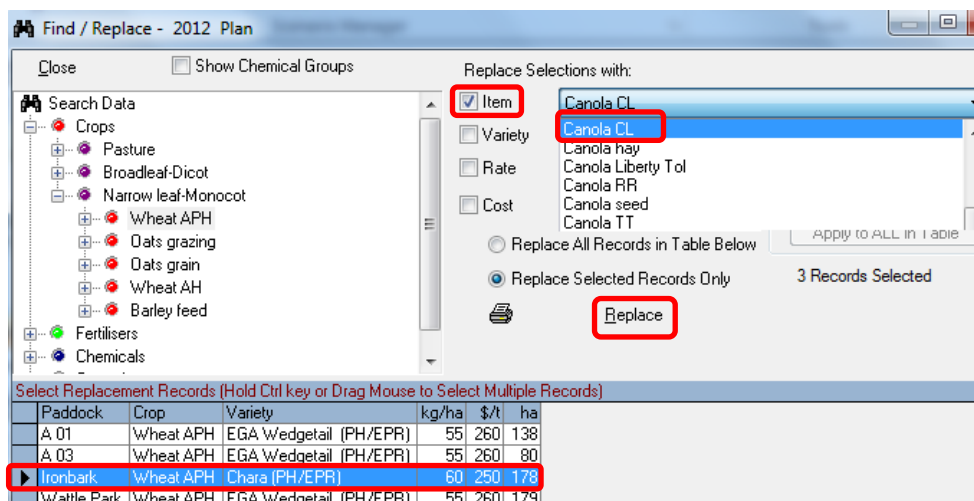
3. Click Yes to confirm Replace Selected Records.
4. Changes appear in Rate – Kg/ha and Cost \$/t columns.

Select Replacement Records (Hold Ctrl key or Drag Mouse to Select Multiple Records)					
Paddock	Crop	Variety	kg/ha	\$/t	ha
A 01	Wheat APH	EGA Wedgetail (PH/EPR)	55	260	138
A 03	Wheat APH	EGA Wedgetail (PH/EPR)	55	260	80
Ironbark	Wheat APH	Chara (PH/EPR)	60	250	178
Wattle Park	Wheat APH	EGA Wedgetail (PH/EPR)	55	260	179

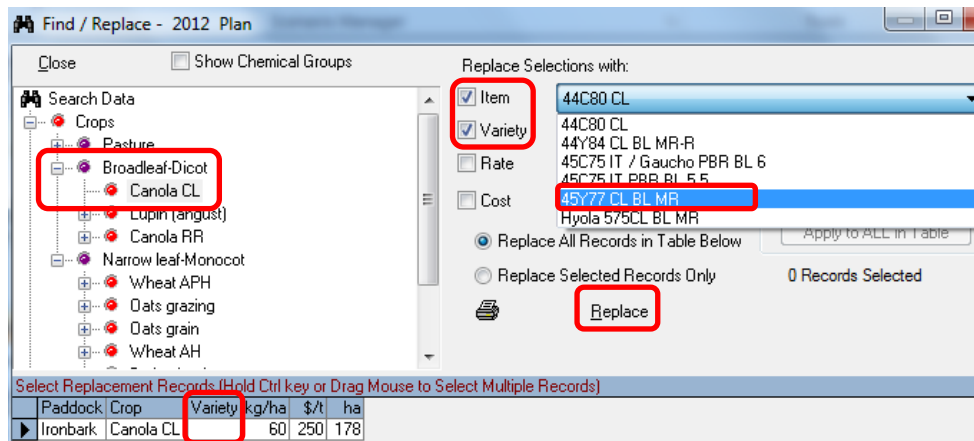
3. Find/Replace Crop Type and Variety

Change crops and varieties in each paddock without the need to use Copy and Paste.

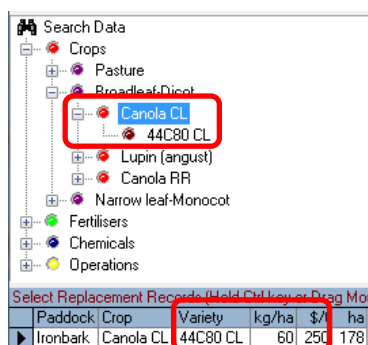
1. Click on '+' next to Crops/Crop/ Type.
2. Tick Item>Select Crop Type from drop down>Select Paddock(s) to apply the change>Click Replace Button>Click Ok to confirm change.



3. Click on '+' Crop/Type to view change to Crop in paddock(s)>Variety is blank. Tick Variety and Item boxes>Choose Variety from drop down>Select paddock(s) to apply the change>Click Replace>Click Ok to confirm change.



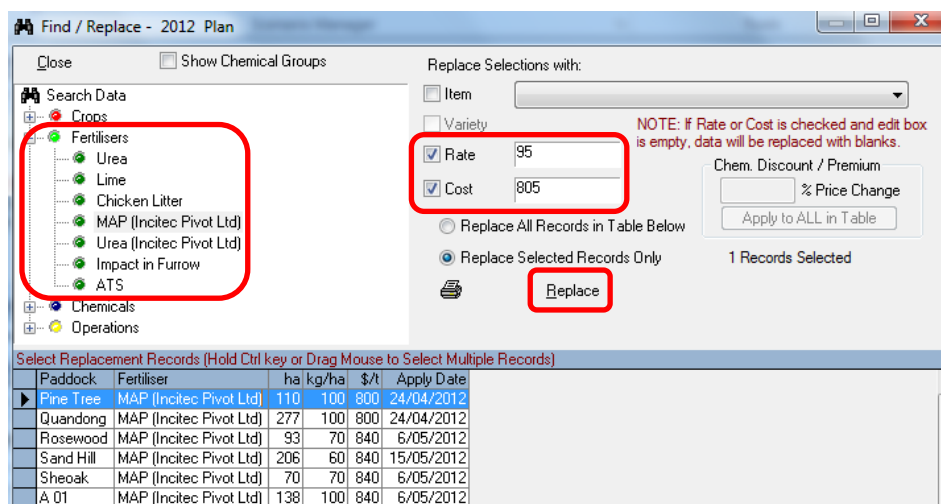
4. Variety appears with default sowing rate (kg/ha) and cost (\$/t) from Master Database.



4. Find/Replace Costs and Rates for Fertiliser/Chemical/Operations

This is particularly handy when estimating costs rather than using default in the Master Database or when updating actual costs.

1. Click '+' Fertiliser/Chemical/Operations>Click Fertiliser/Chemical/Operation Name.

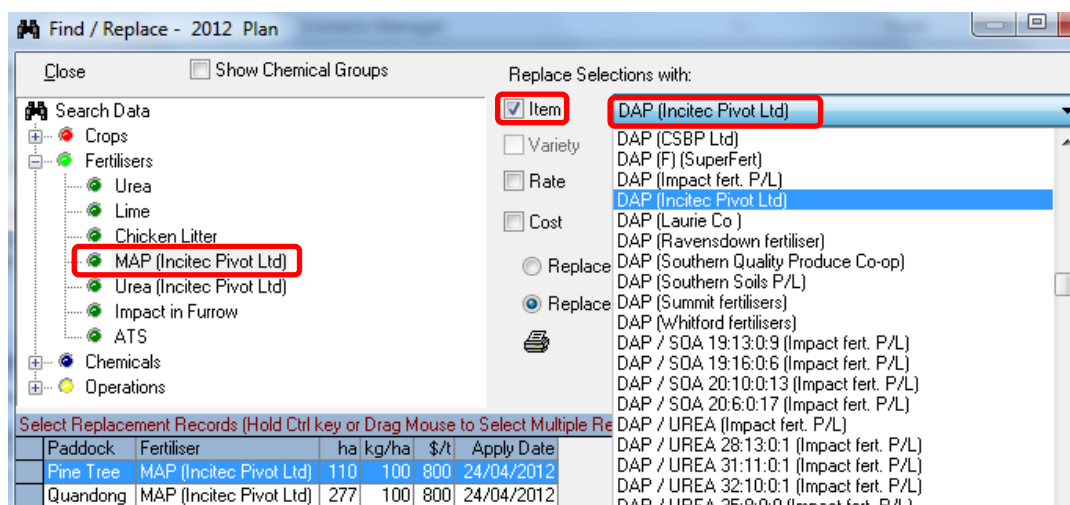


2. Tick Rate and Cost> Add application rate (kg/ha) and cost (\$/t).
3. Select paddock(s) – holding Ctrl key down while selecting multiple paddocks.
4. Click Replace>Click Ok to confirm changes.

5. Find/Replace Fertiliser/Chemical/Operations

Changing products or operations is simple when using Find Replace.

1. Click on '+' Fertiliser/Chemical/Operations>Click Fertiliser/Chemical/Operation Name
2. Tick Item>Select Product/Operation from drop down>Select Paddock(s) to apply the change>Click Replace button>Click Ok to confirm change.



Note: Remember to ensure that the rate and cost is relevant to the new product/operation chosen.

6. Chemical Discount/Premium

Adjust the chemical discount/premium as a percentage change for all or individual chemicals.

1. Click '+' to expand to Chemicals.
2. Chem.Discount/Premium %Price Change becomes active>Add %.

Find / Replace - 2012 Plan

Close Show Chemical Groups

Replace Selections with:

☐ Item Dynaflo ST

☐ Variety

☐ Rate

☐ Cost

NOTE: If Rate or Cost is checked and edit box is empty, data will be replaced with blanks.

Chem. Discount / Premium
10 % Price Change

Apply to ALL in Table

☒ Replace All Records in Table Below

☐ Replace Selected Records Only

0 Records Selected

Replace

Select Replacement Records (Hold Ctrl key or Drag Mouse to Select Multiple Records)

Paddock	ChemName	ha	\$/Unit	Units/ha	Location	Apply Date
Kangaroo	Glyphosate CT	159	4.5	1	Mix 1	1/01/2012
One Tree	Glyphosate CT	185	4.5	1	Mix 1	1/01/2012

3. Click on:
 1. Chemicals for it to apply to all Chemicals.
 2. Chemical Type such as Herbicides for it to apply to All Herbicides.
 3. Chemical Product for it to apply to only that product.
4. Click Apply to ALL in Table.