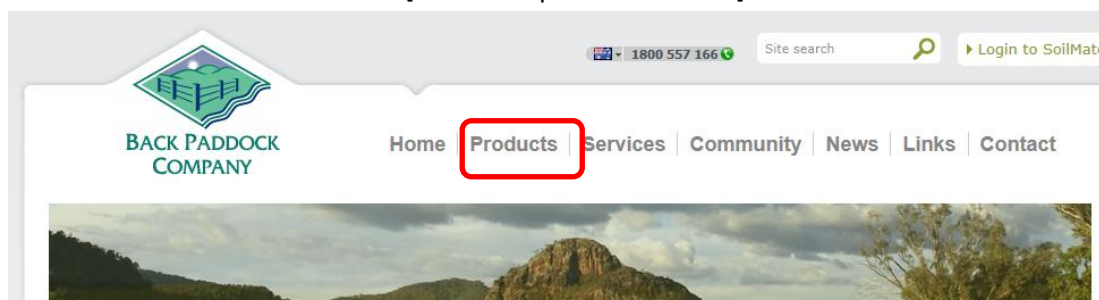


Reference Data Update

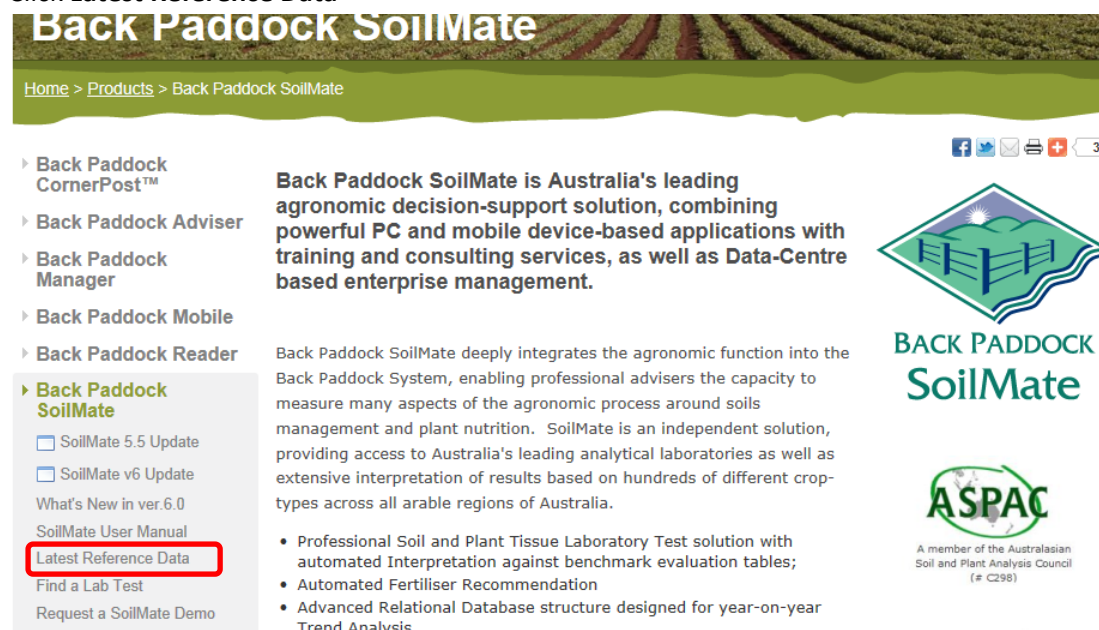
1. Go to the **Back Paddock website** [www.backpaddock.com.au] and Click **Products**.



2. Click **Back Paddock SoilMate**

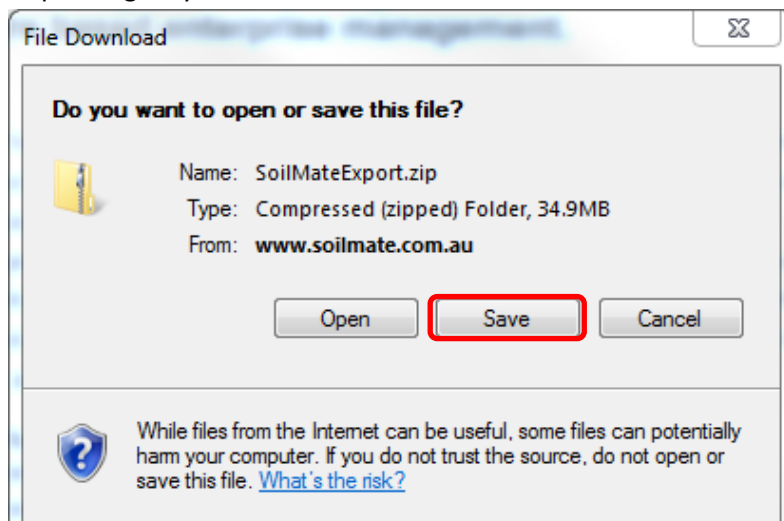


3. Click **Latest Reference Data**



4. Be patient as this may take some time.

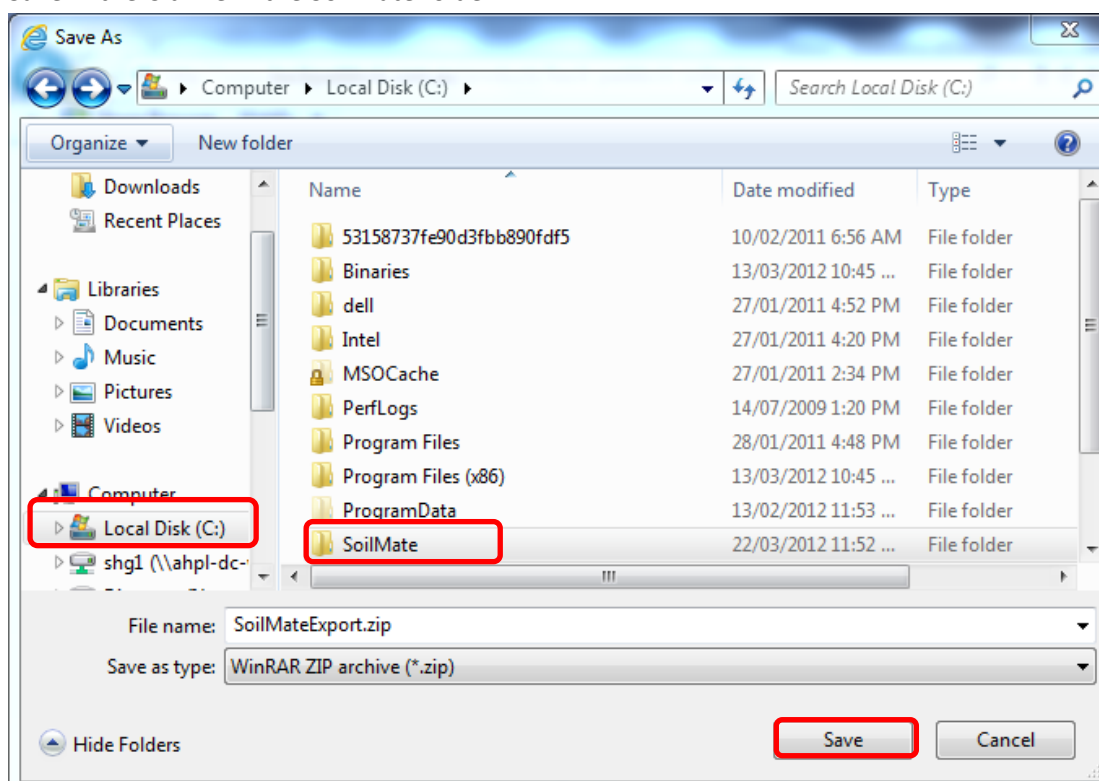
5. Depending on your Internet browser either Click **Save** in the File Download box



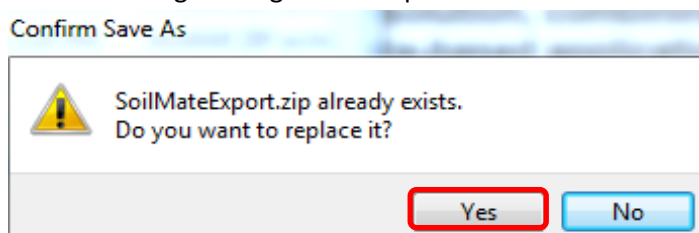
or Click **Save As** in the box that appears at the bottom of the screen.



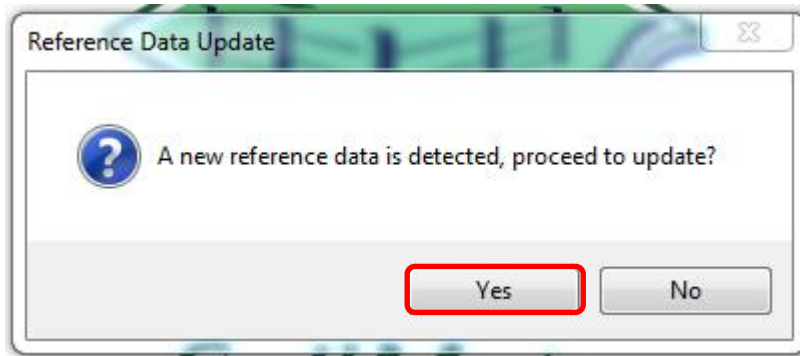
6. Save in the C drive in the SoilMate folder



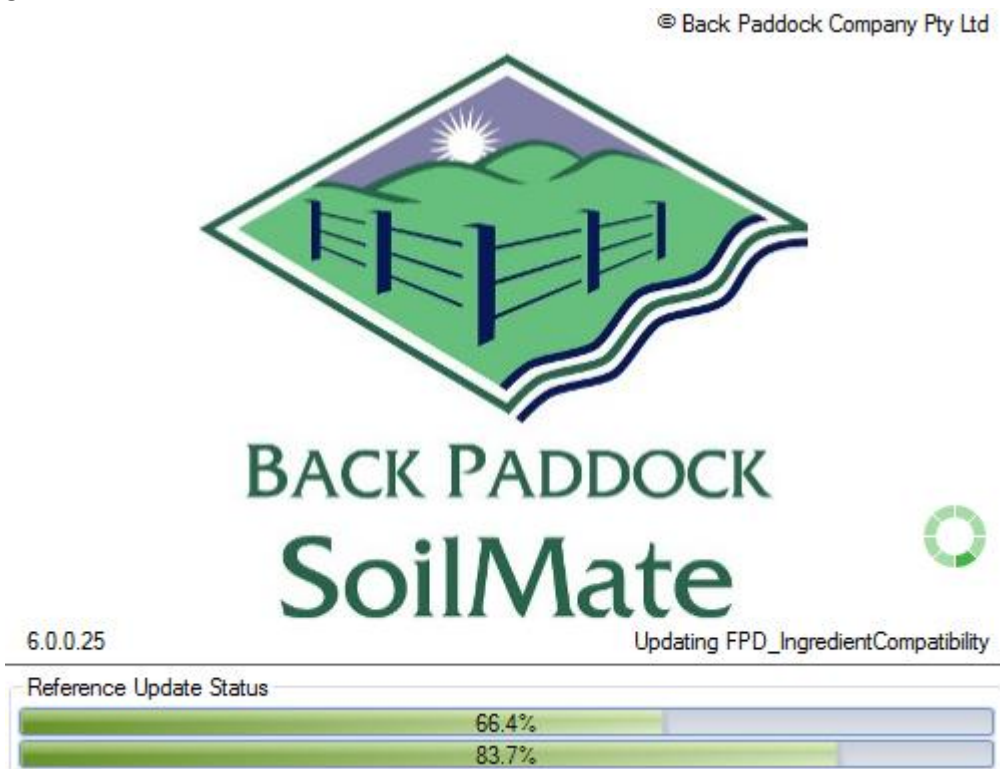
7. If the following message comes up. Click **Yes**



- 8. This may take some time
- 9. The following screen comes up. Click **Yes**



- 10. SoilMate will now upload the new reference data. This can be seen by the progress of the green bars at the bottom.



- 11. The following message comes up when the upload has succeeded. Click **OK**.

